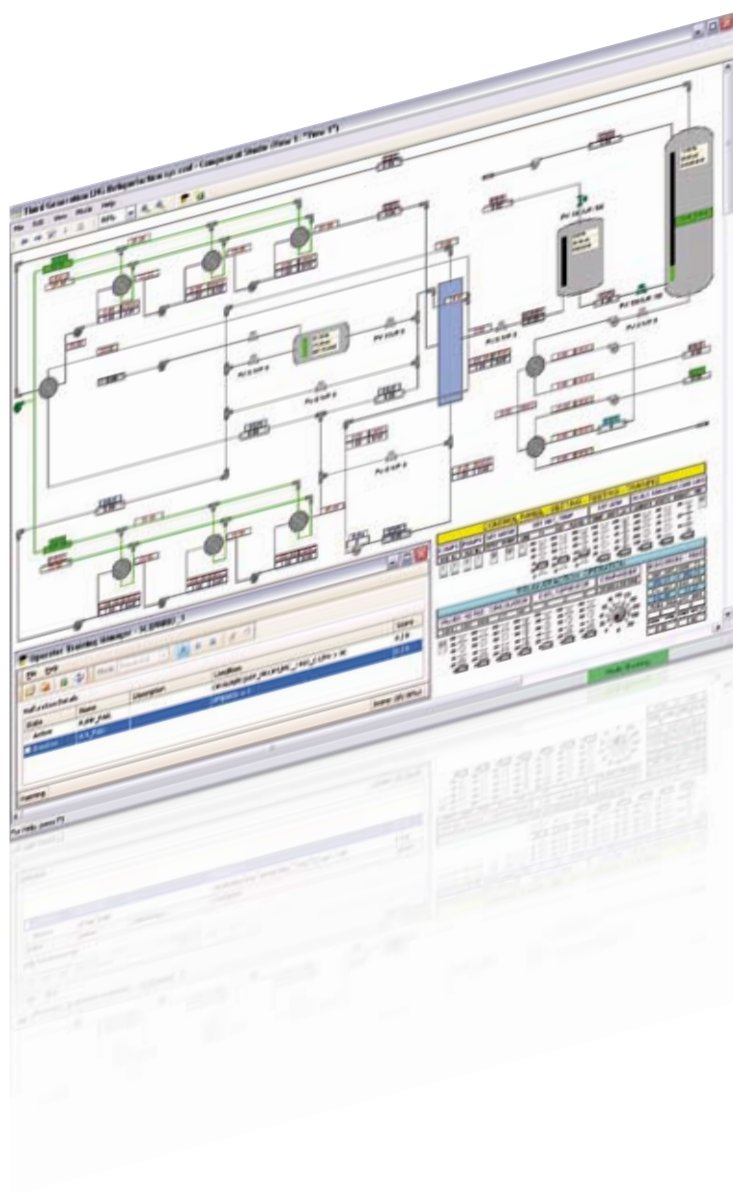


For your automation solutions

Collaborative Automation Partner Program

Powerful simulation for your process
automation project



MYNAH Technologies

Schneider Electric and MYNAH Technologies share their expertise to provide an unmatched level of simulation for your process automation system.



Collaboration for a more comprehensive simulation of your process automation project

A partnership for the simulation of your automation applications

MYNAH's MiMiC is a dynamic process simulation software solution providing a comprehensive suite of functions for software acceptance testing and operator training.

MiMiC allows you to compress the project schedule, shorten the duration of startup, minimize process downtime, make on-spec product quicker, comply with FDA, OSHA, and ISO regulations, and increase operational effectiveness.

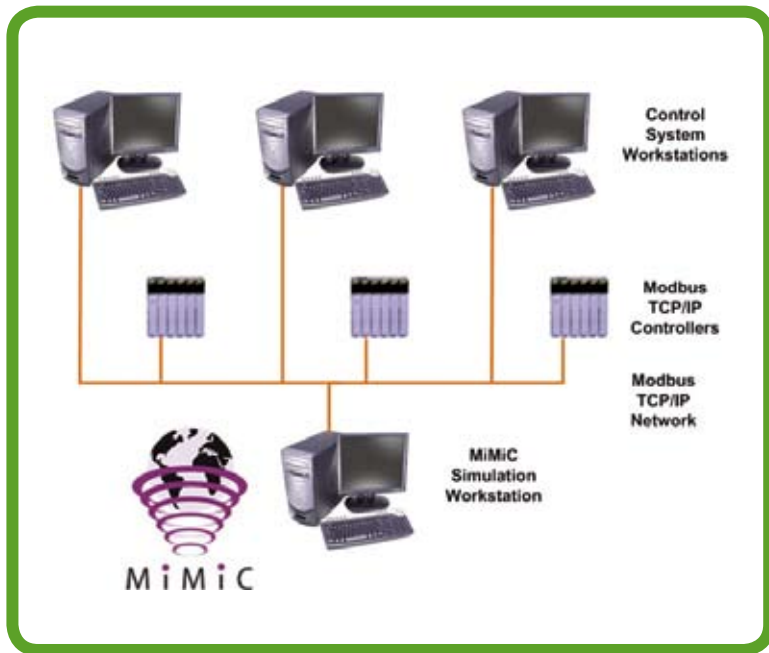
Unity Pro is the new common programming, debugging and operating software for Telemecanique's PLC lines: Modicon Quantum, Premium and Atrium.

Integrated with Unity Pro, MiMiC provides:

- > Process modeling for less time and money
- > Completely non-intrusive process simulation interface for Unity Modicon PLCs
- > Powerful easy-to-use higher-level simulation functions
- > High-performance, real-time process simulation engine
- > Complete tools for control system software acceptance testing
- > Operator Training Manager integrated with real-time simulation models



Unity Pro

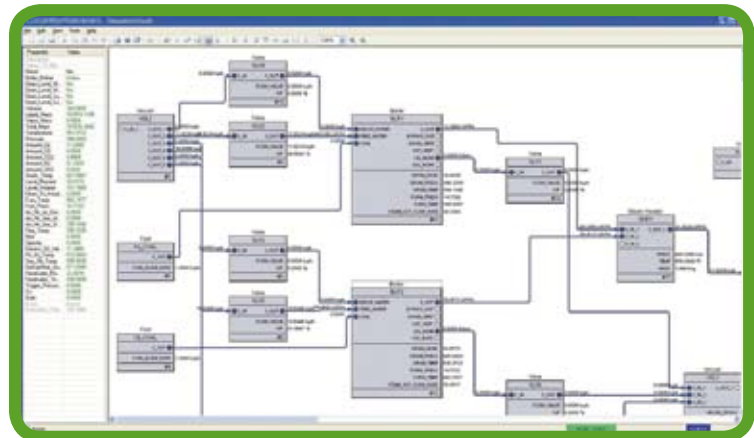


Non-intrusive real-time simulation interface for Unity Pro

MiMiC enables process engineers to test their automation solutions faster, and more accurately than ever before. MiMiC is intuitive and easy to learn, requiring little training. With MiMiC, users can perform automated testing as well as manual device-by-device testing, in a minimum amount of time. MiMiC is non-intrusive. This means the control system configuration does not have to change in order to use MiMiC.

Simulation Environment

The **MiMiC** simulation environment consists of built-in process modeling objects in IEC1131 functions blocks. The MiMiC simulation environment supports discrete and analog devices, batch and continuous processes.



Save time and money on your process automation projects

The partnership between Schneider Electric and MYNAH Technologies provides you with an optimized solution for your process automation simulation needs.

- > Non-intrusive, real-time simulation interface for up to 10 PLCs or PLC simulator nodes
- > Simulated IO interfaces for Unity PLCs or Schneider PLCs that support Modbus TCP/IP
- > Auto-generation of the simulation tags from Unity Pro database
- > Comprehensive simulation and operator training solution optimized for the Unity product line



More service with Schneider Electric's worldwide coverage

> Permanent worldwide availability

With over 5000 sales outlets in 130 countries, wherever you are you can be sure of finding a full range of products to meet your needs and fully compliant with the standards in your country.

> Technical support

Wherever you are Schneider Electric provides technical support around the world. What's more, Schneider's experts are at hand to work out a customized solution with you.



M Y N A H

MYNAH Technologies is a leading supplier of dynamic process simulation and industrial Ethernet solutions. MYNAH's products like MiMiC Simulation Software (<http://www.mynah.com/products/mimic>) provide cost-effective, highest-performance solutions for process companies worldwide. MYNAH Technologies' global headquarters is in Chesterfield, Missouri, USA. MYNAH is driven by our focus on our Core Values and What We Do.

Our Core Values:

- > **INTEGRITY** – Unmatched Honesty, Responsibility, and Commitment
- > **ATTITUDE** – Positive energy, Respect for each individual
- > **INNOVATION** – Desire for knowledge, Open to new ideas
- > **EXCELLENCE** – Motivation to be the best individually and corporately

What We Do

We Reduce the Cost, Risk, and Complexity of Connecting the Digital Plant. MYNAH is proud to be Schneider CAPP member and has worked with Schneider Electric since the initial planning of the Unity release.

Visit MYNAH Online at www.mynah.com

Collaborative Automation

by



Make the most of your energy

Schneider Electric Industries SAS

www.schneider-electric.com

© 2010 Schneider Electric – All rights reserved - Design: pemaco

07/2010