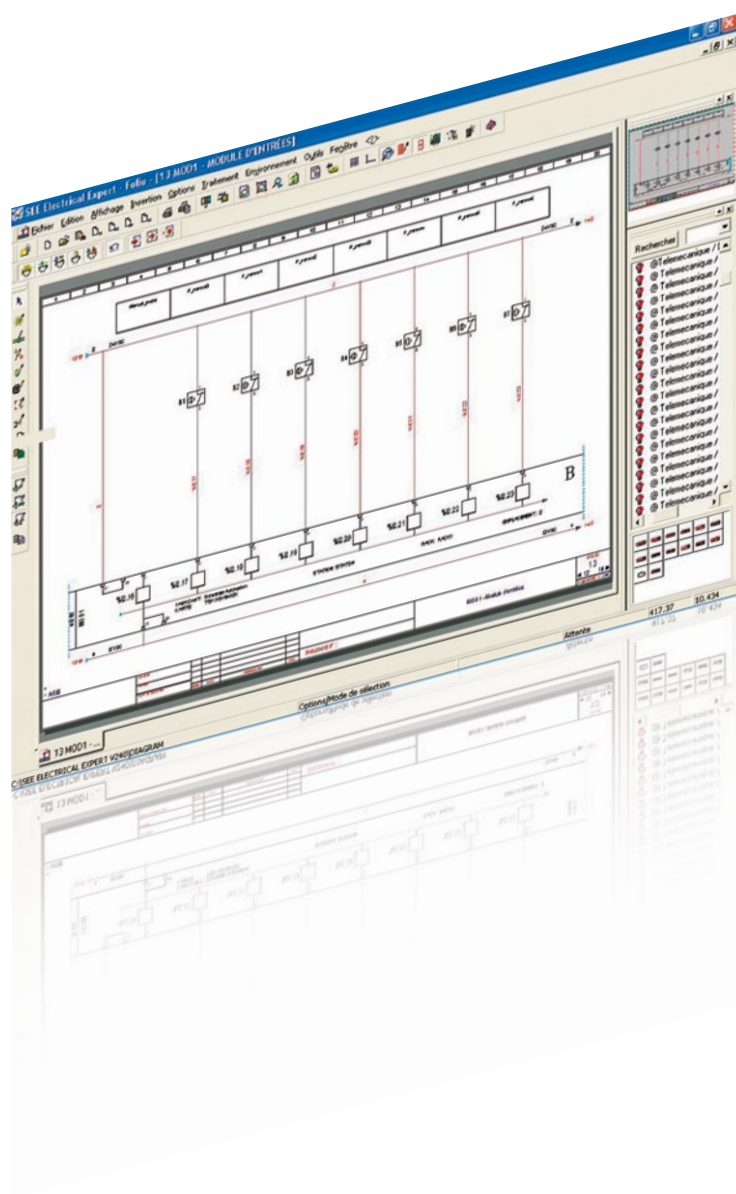


For your automation solutions

# Collaborative Automation Partner Program

Allow your PLCs and electrical diagrams  
to communicate



# IGE-XAO

Collaboration between Schneider Electric and IGE-XAO has enabled improved communication between automation and electrical wiring diagram engineers and technicians through data sharing.

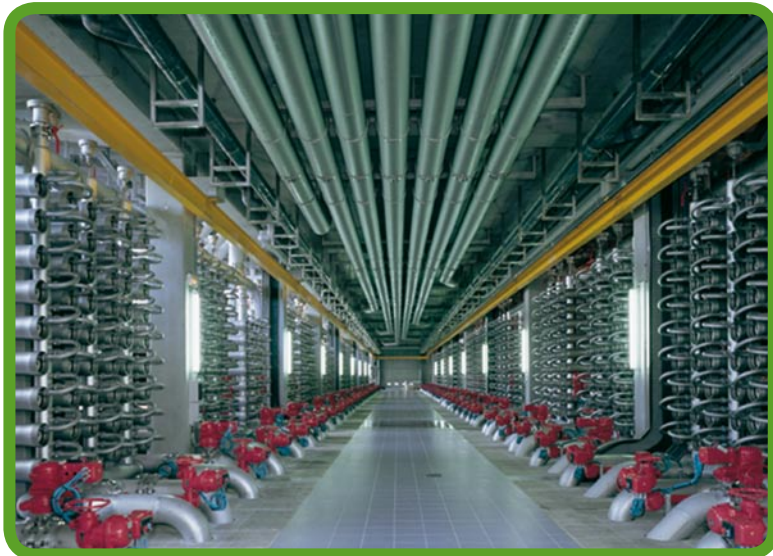


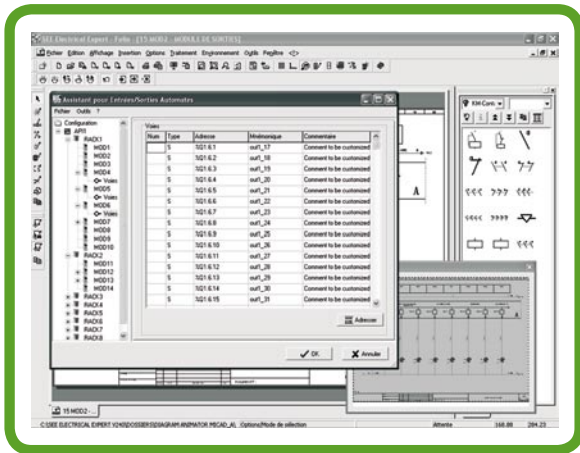
Optimizing communication between electrical CAD software and the world of the PLC

**Incorporating PLCs in your electrical files normally represents numerous working hours in terms of creation, modification and verification.**

The SEE ELECTRICAL EXPERT and Unity Pro data exchange solution therefore aims to:

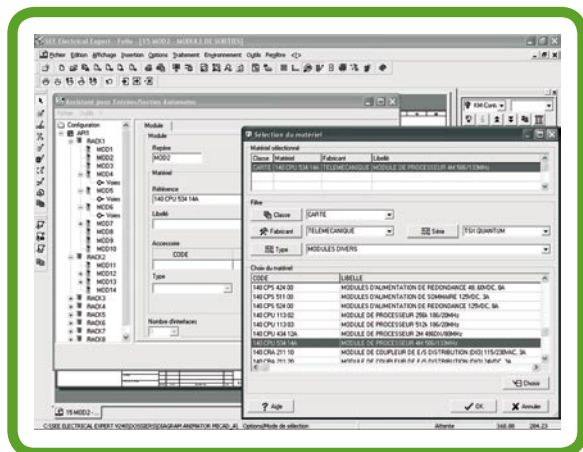
- > Generate and update your I/O card plans automatically
- > Re-inject data derived from electrical diagrams into Unity Pro





## Two-way data exchange

Unlike conventional solutions that require interfaces, Unity Pro allows SEE ELECTRICAL EXPERT to obtain all the necessary information by accessing Unity Pro data directly. Similarly, SEE ELECTRICAL EXPERT writes data directly to Unity Pro. What is more, data can be exchanged in XML format.



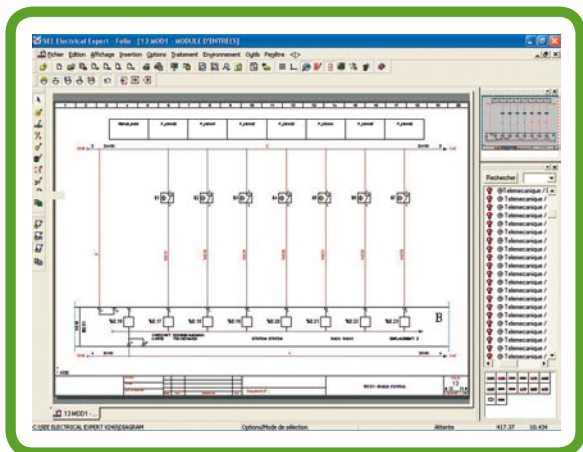
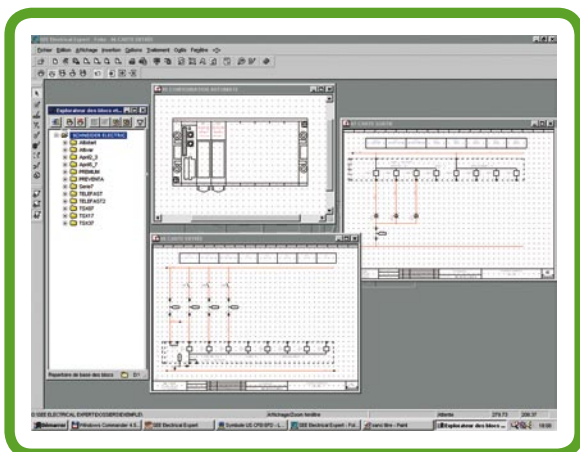
## An expert software package that is immediately operational

The Schneider Electric environment is supplied with SEE ELECTRICAL EXPERT:

- > Symbols
- > Backgrounds
- > Equipment references

## SEE ELECTRICAL EXPERT is synonymous with...

Managing your circuit diagram files using advanced identification functions, managing terminals and connectors, generating parts lists, cabinet layout and wiring diagrams.



# Save time and ensure the quality of your information

Data sharing between Unity Pro and SEE ELECTRICAL EXPERT improves productivity by avoiding double entries and ensuring data consistency.



More service with Schneider Electric's worldwide coverage

## > Permanent worldwide availability

With over 5000 sales outlets in 130 countries, wherever you are you can be sure of finding a full range of products to meet your needs and fully compliant with the standards in your country.

## > Technical support

Wherever you are Schneider Electric provides technical support around the world. What's more, Schneider's experts are at hand to work out a customized solution with you.



IGE-XAO specializes in CAD solutions for electrical, system and industrial liquid applications.

- > Over 17 years experience
- > More than 40,000 licenses installed worldwide
- > Tens of millions of plans input under the IGE-XAO standard
- > Quoted on the Stock Exchange
- > 20 subsidiaries and branch offices in 11 different countries
- > 5 sales offices in France (Paris, Toulouse, Nantes, Grenoble, Marseille)
- > 300 staffmajor regional offices in Chicago, Tokyo, Beijing, Karlsruhe, Milan and Mulhouse.

> [www.ige-xao.com](http://www.ige-xao.com)

Collaborative Automation  
by



> Make the most of your energy